

# From data to services: what users can already experience – DestinE example



[DEA – DestinE Platform](#)

## DEA (DestinE Storytelling) Copilot

**No-code:** create interactive data stories to make EO/climate/statistical data accessible to non-expert users.

**DEA Copilot / AI Assistant:** users can **create sample stories using natural language** directly from the DEA landing page via “**Ask AI**” (sign-in required).

**Multimodal prompting:** choose a suggested prompt, type, or use voice; then visualize or edit the generated story.

**Coming:** Ask → Analyse → Insert

Operated by Alia Space System

# From data to services: what users can already experience – DestinE example



# From data to services: what users can already experience – DestinE example



## GeoAI (DestinE)

Flexible: train AI models for your specific EO use case (detection or segmentation) and apply them to similar objects.

Works across EO data diversity: supports various resolutions, image types, and sensors.

Accessible: no-code — users can create & deploy models without AI / geospatial expertise.

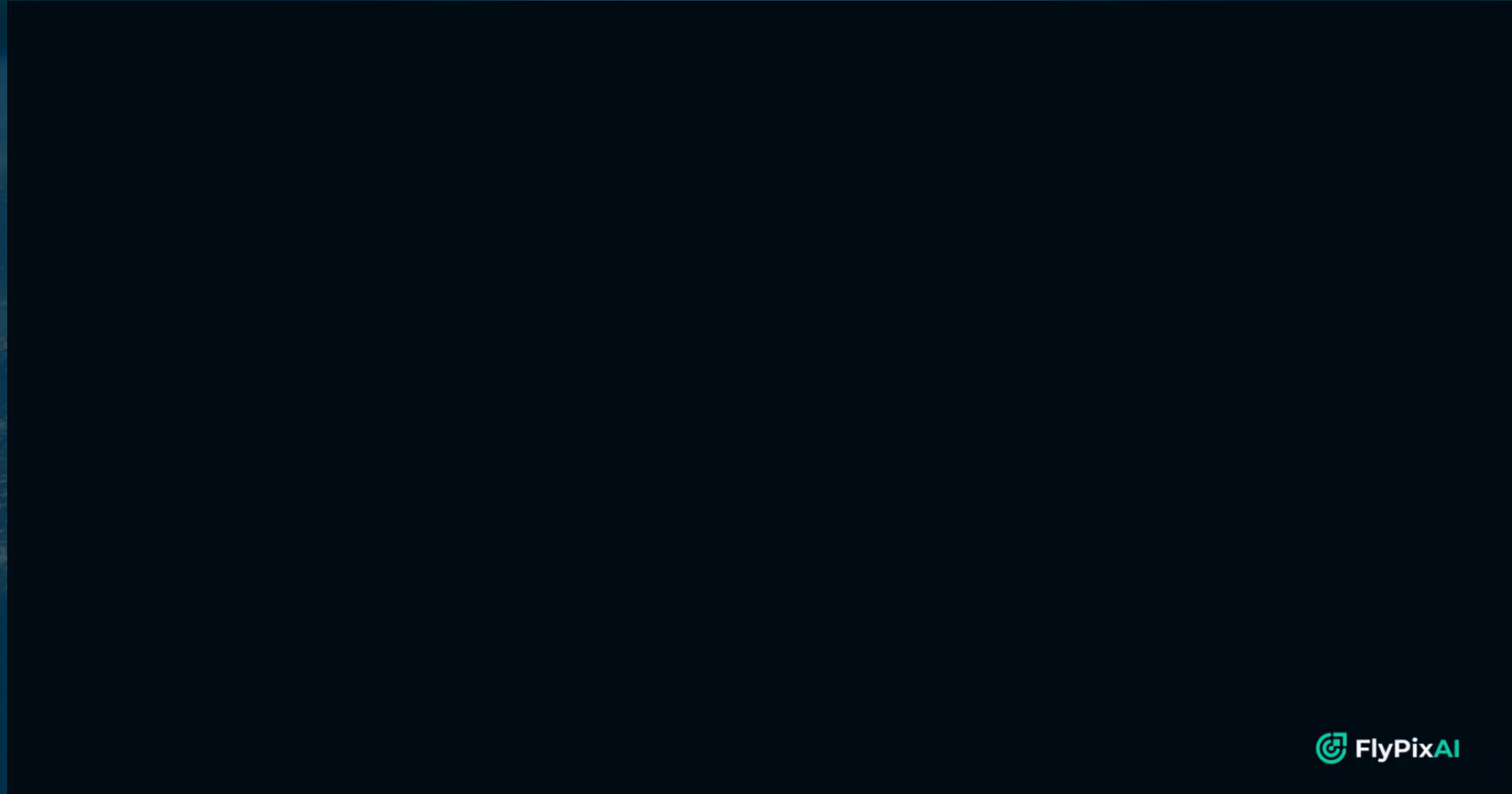
Built on DestinE data portfolio (e.g. DestinE Climate Adaptation DT datasets), including Copernicus Sentinel-2 Level-2A MSI.

Operated by FlyPix AI.



[GeoAI – DestinE Platform](#)

# From data to services: what users can already experience – DestinE example



 FlyPixAI



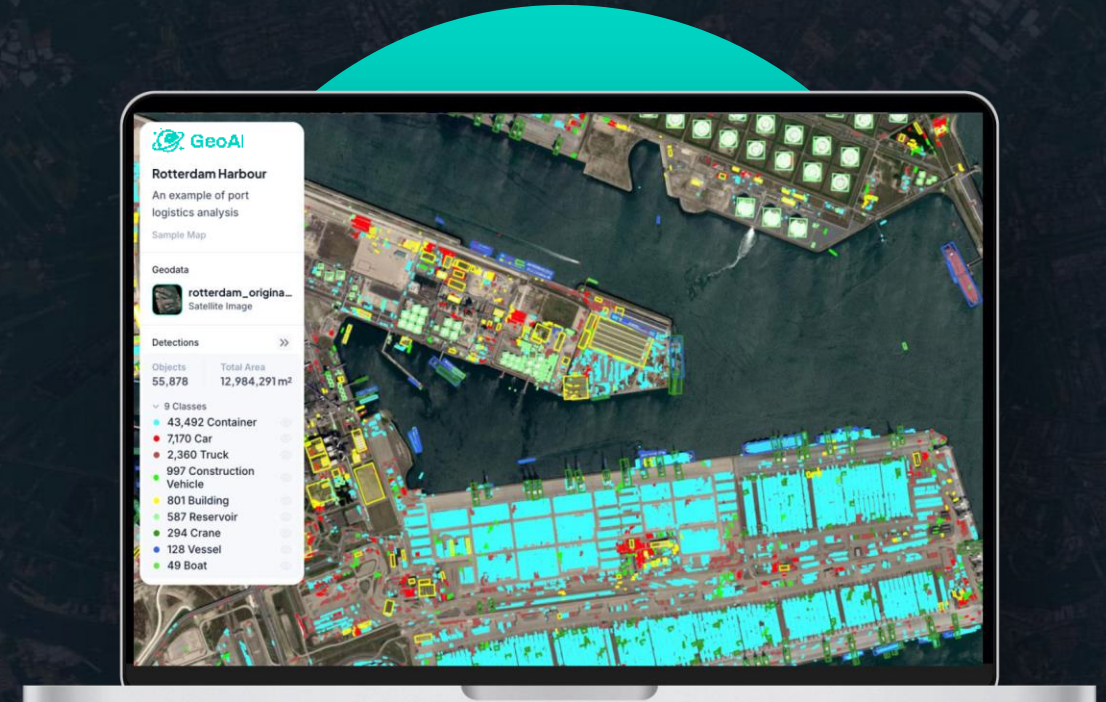


# Decoding Earth: From Pixels to Actions



Dr. Sergey Sukhanov

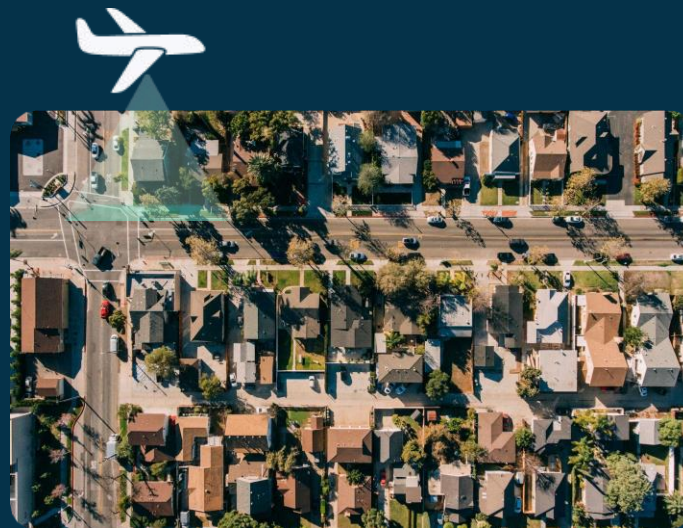
FlyPix AI GmbH | Robert-Bosch-Str. 7, 64293 Darmstadt, Germany  
[www.flypix.ai](http://www.flypix.ai) | [info@flypix.ai](mailto:info@flypix.ai) | +49 6151 2776497



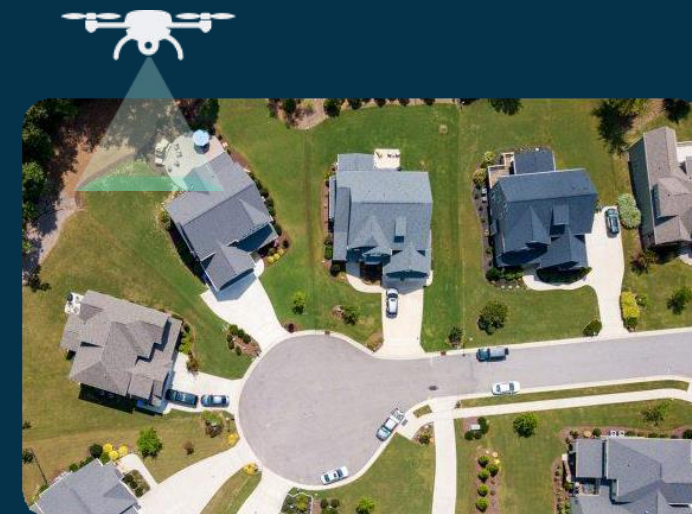
# Petabytes (90%) of data unused



Satellite



Aerial



Drone



Public and private sector need insights,  
not the raw data

# GeoAI: One Service, Countless Applications

## SaaS Platform

For aerial, drone and satellite imagery

## Custom EO use cases

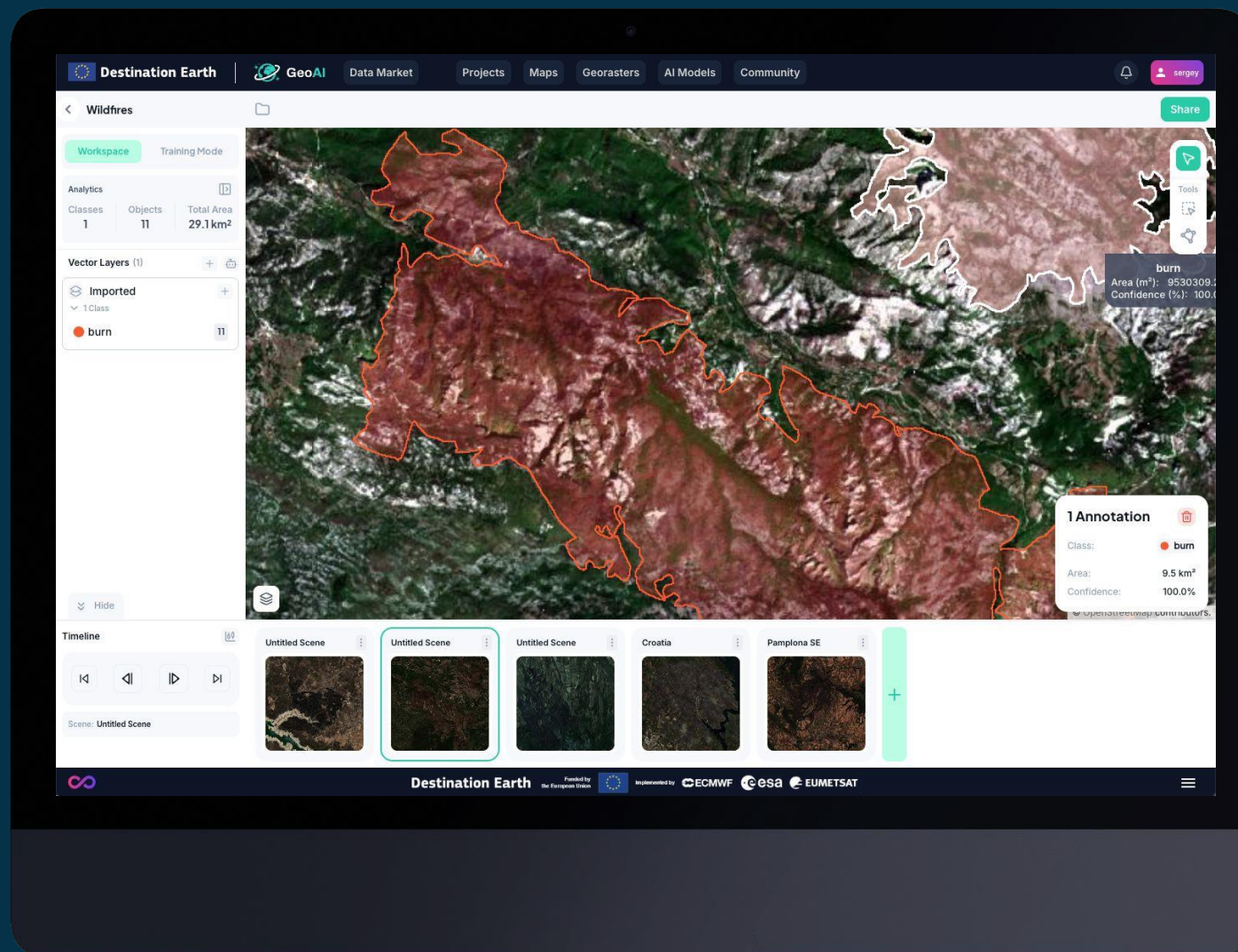
To monitor, detect, inspect

## User Friendly

No GeoSpatial or AI expertise required

## Unique AI tech

Makes scene analysis with few clicks



# Simple Workflow

# 4

Simple steps for Instead  
of weeks/months of work  
and inflated budgets

1



Upload/Connect to EO data

2



Select/Create **AI Model** for your custom task

3



Apply **AI Model** one-time or continuously

4



Get Insights, Decide and Act

# Applications Our Customers Enable



Public sector



Disaster Response



Insurance



Energy



# Use Case Examples

What our users are already doing today

# Forestry Management / Agriculture

## Detects & Count trees or plants

**Destination Earth** | GeoAI | Data Market | Projects | Maps | Georasters | AI Models | Community

**Analytics**  
Classes: 1 | Objects: 16k | Total Area: 1.0 km<sup>2</sup>

**Workspace** | Training Mode

**Analytics**  
Classes: 1 | Objects: 16k | Total Area: 1.0 km<sup>2</sup>

**Vector Layers (2)**  
annotations  
1 Class | 1 Note | 645

**Palm Tree Detector**  
1 Class | 16,358

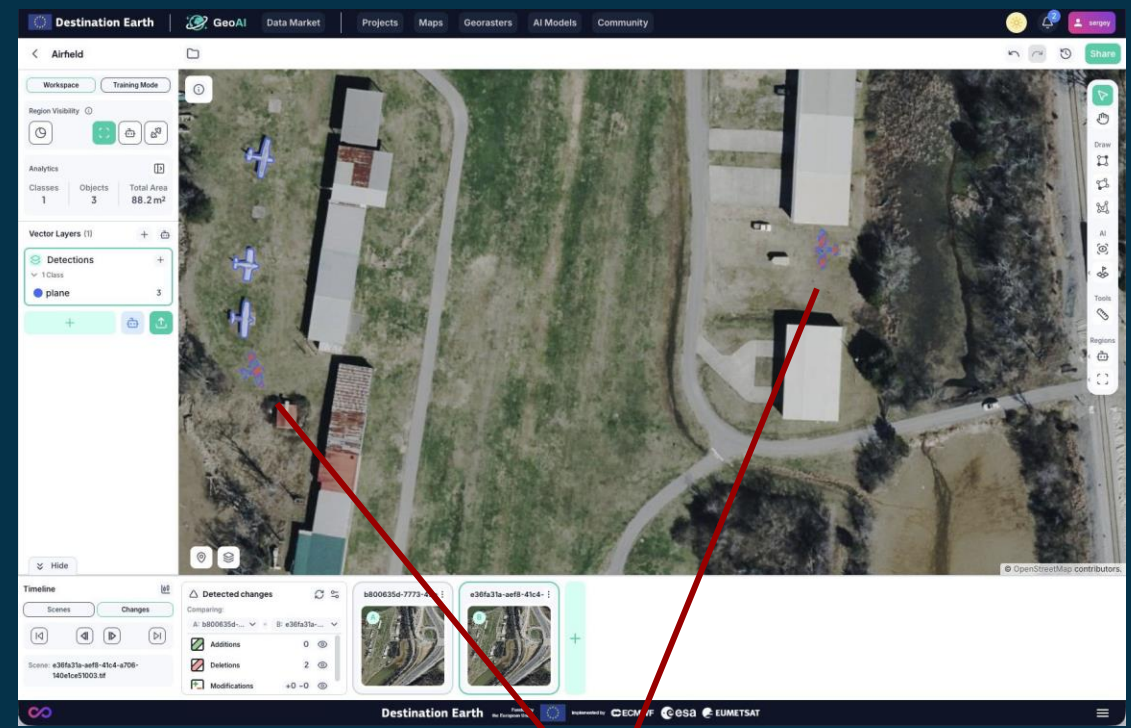
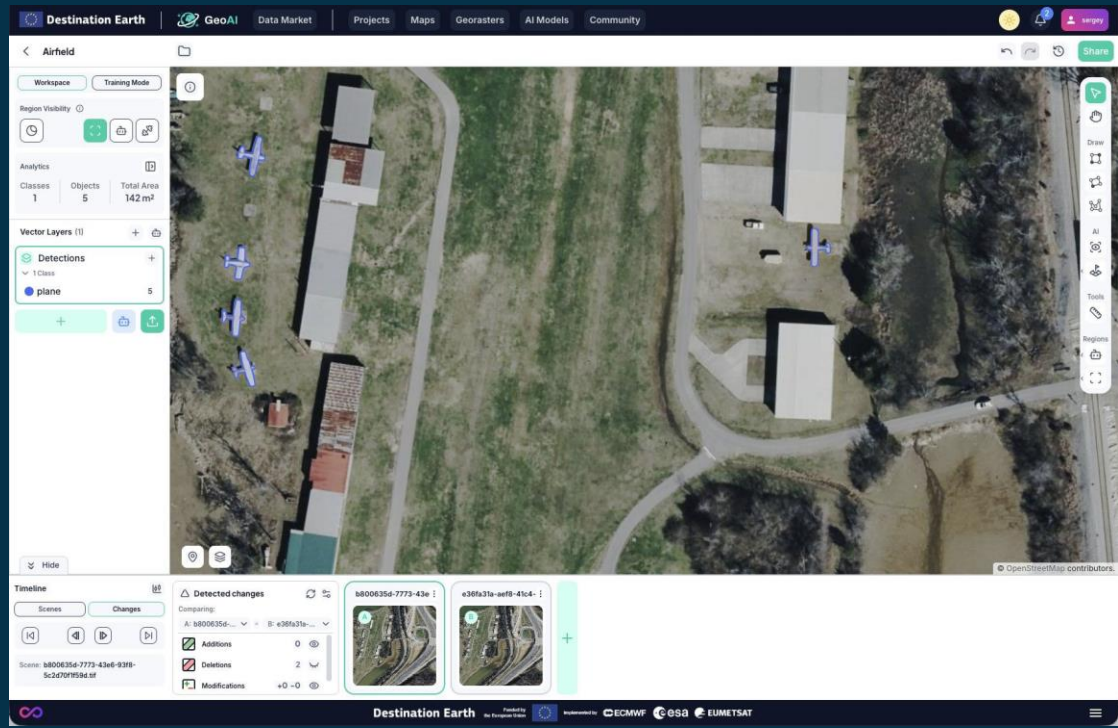
Objects	Area	Confidence
palm tree 22	77.9	76%
palm tree 23	53.4	74%
palm tree 24	51.7	74%
palm tree 25	56.0	77%
palm tree 26	52.4	79%
palm tree 27	61.2	81%
palm tree 28	51.3	80%
palm tree 29	64.2	74%
palm tree 30	66.0	82%
palm tree 31	53.6	73%

### GeoAI allows

- To detect, classify and count trees and plants
- To monitor their evolution

# Monitoring / Inspection Tasks

## Tracking of objects / items



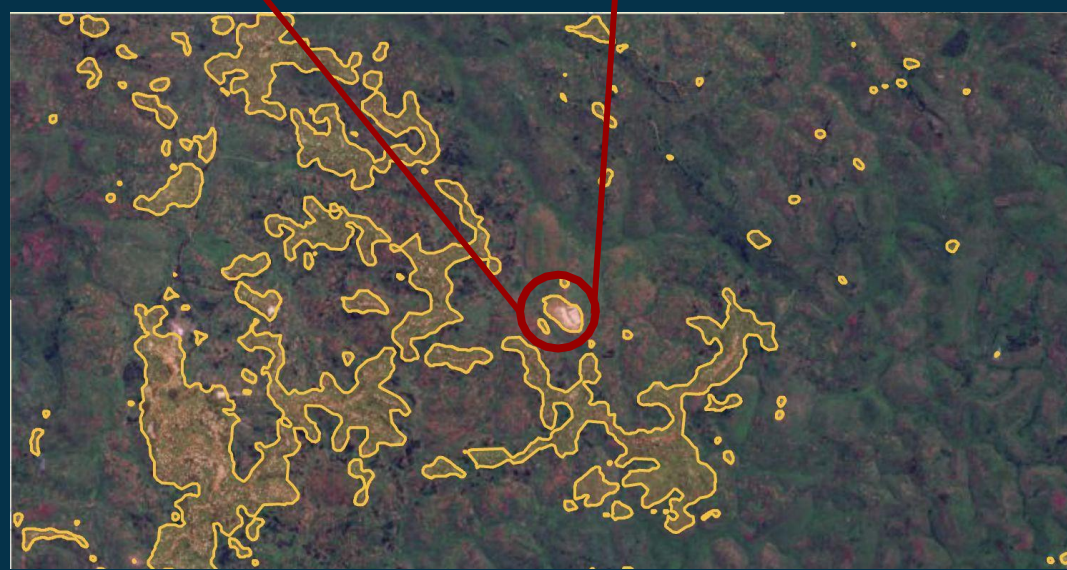
Planes are missing

### GeoAI allows

- To monitor areas, detect objects and report a change e.g. missing objects or new objects

# Disaster & Humanitarian Response

## Early detection of refugee camps



Low resolution open data



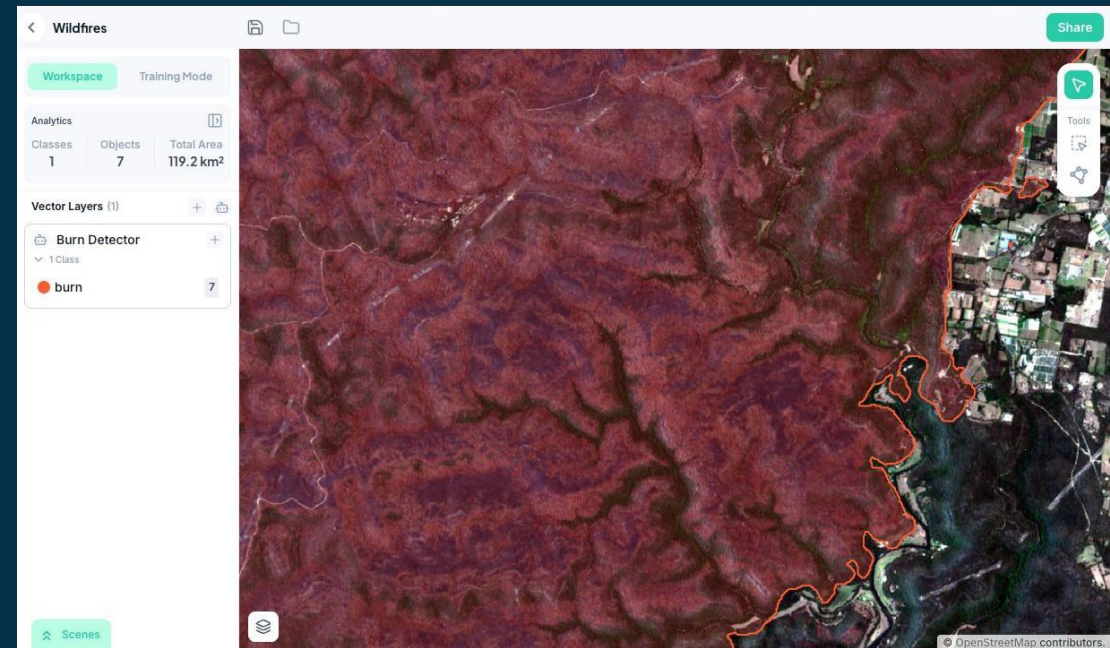
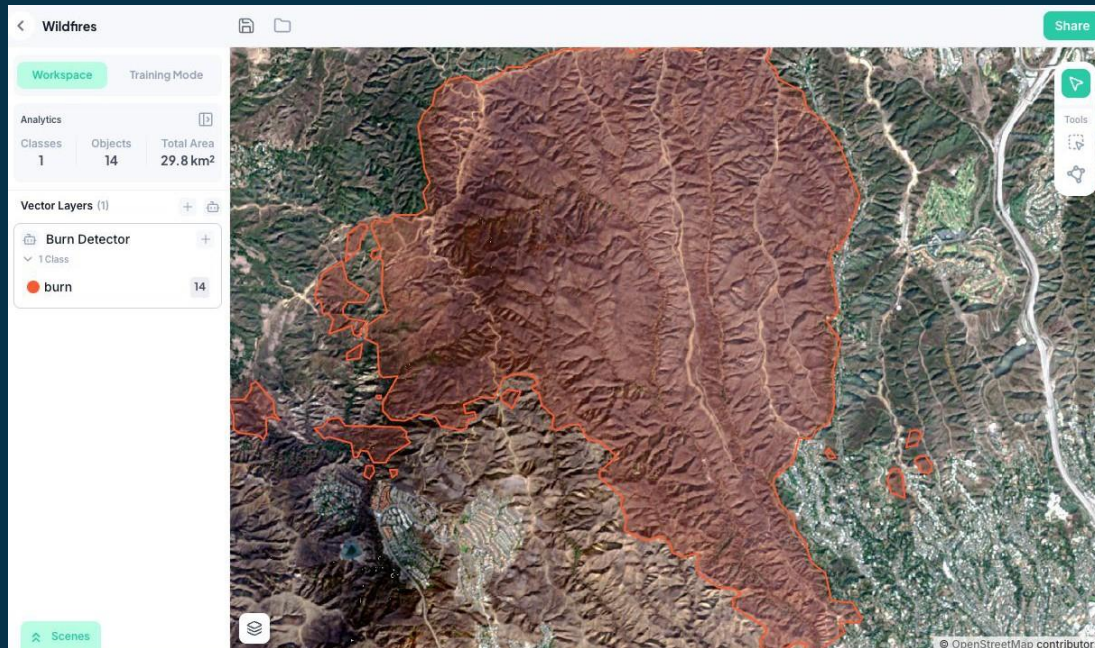
High resolution commercial data

### GeoAI allows

- To perform early detection of refugee camps worldwide with open low resolution data such as Sentinel-2
- or to perform detection and count of structures within camps with high resolution commercial data

# Disaster & Humanitarian Response

## Burnt Areas Detection

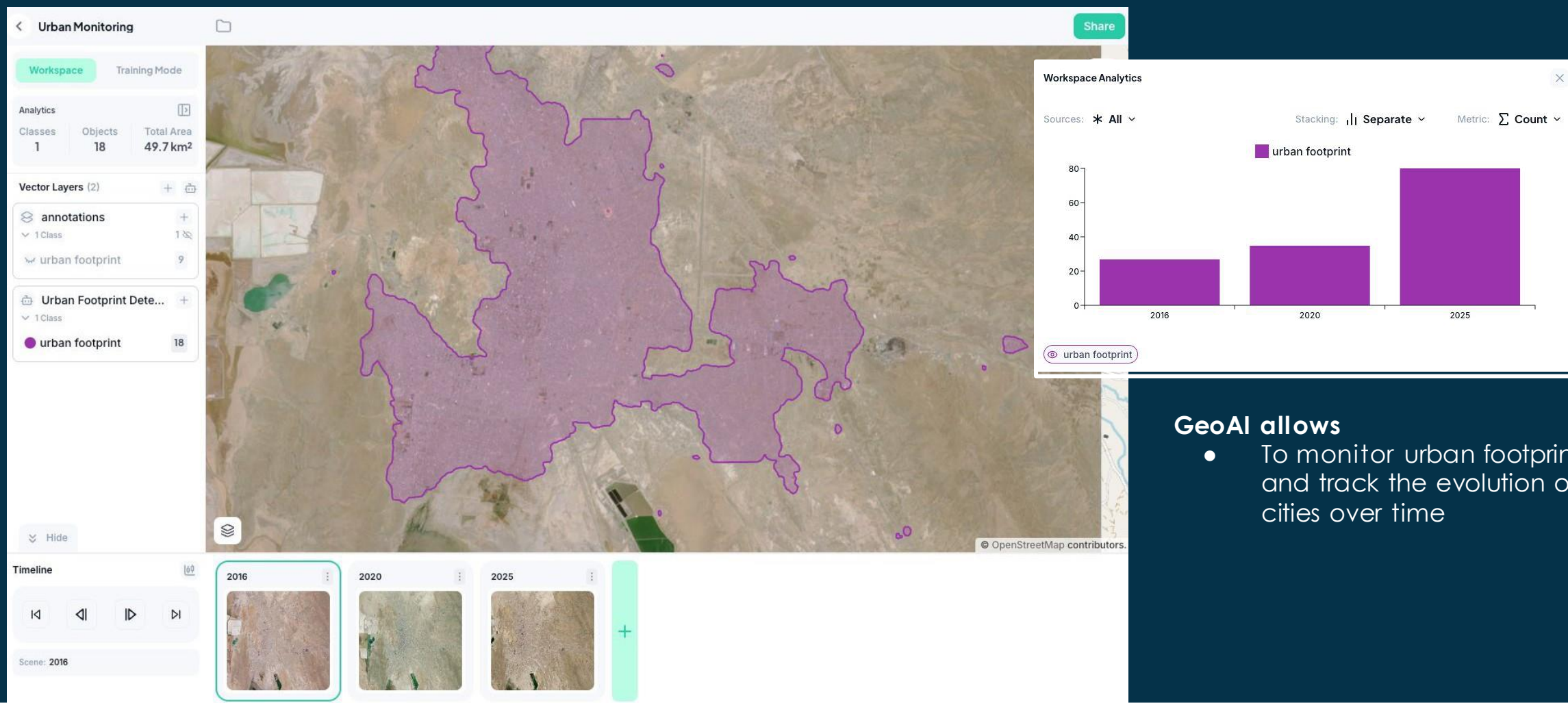


### GeoAI allows

- Locate wildfires areas worldwide with open low resolution data such as Sentinel-2
- Target groups:
  - Public Sector & Government Agencies
  - Insurance & Reinsurance Companies
  - NGOs & International Organizations
  - Forestry & Land Management Firms
  - Climate Research Institutions & Think Tanks

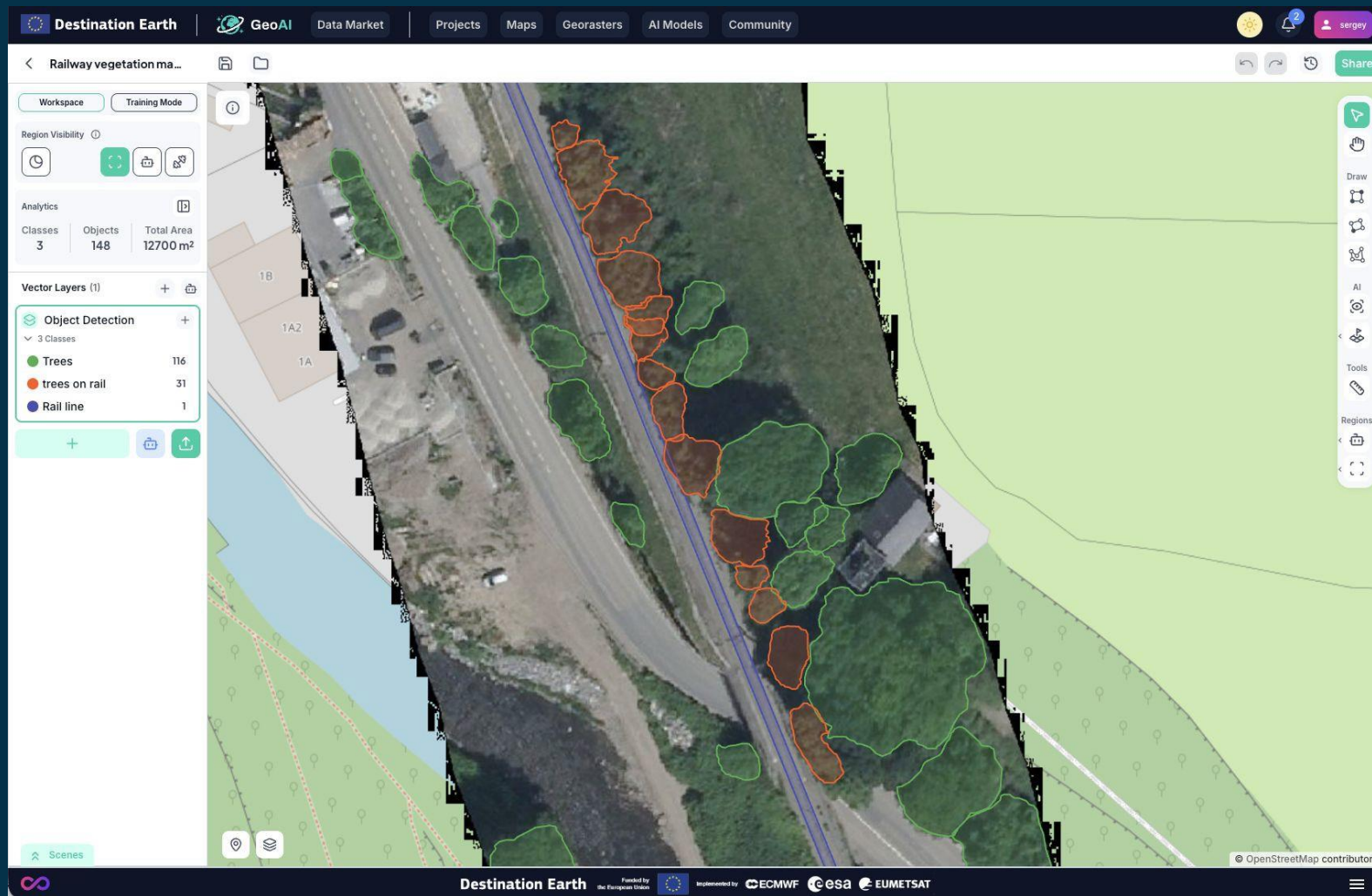
# Disaster & Humanitarian Response

## Urban Footprint Evolution Tracking



# Vegetation Management

## Railways and power lines



### GeoAI allows

- To detect trees and vegetation that should be addressed
- Potential areas: railways, roads, powerlines and other linear infrastructure

Thank you!



FlyPix AI GmbH  
Robert-Bosch-Str. 7,  
64293 Darmstadt  
Germany

[info@fypix.ai](mailto:info@fypix.ai)  
+49 6151 2776497

