

## Copernicus for Cultural Heritage Summer School Workshops

The Copernicus for Cultural Heritage Summer School Workshops provided already three workshops during 2023 in Limassol (Cyprus), Rome (Italy), and Oberpfaffenhofen near Munich (Germany). They are organized by the Cyprus University of Technology (CUT), ISPRA (the Italian Institute for Environmental Protection and Research), and the DLR (German Aerospace Center). Due to the overwhelming interest an additional workshop will be held in July 2025 at DLR in Oberpfaffenhofen.

Each workshop targets local and regional experts, archaeologists and decision makers, authorities, companies, researchers and students providing training and exchange on usage of Copernicus data for Cultural Heritage monitoring and preservation. Each of the workshops will include two days of lectures, presentations of experts and show-cases by participants, exercises and hands-on-trainings, and one day of visits to cultural heritage sites.

The participants are invited to share their experience and show-cases where they already use satellite or remote sensing data or work which may gain additional value through the use of satellite data.

Attendance is free of charge but limited in number of participants on a first come first served basis. Attendees are responsible for their own travel and accommodation arrangements and payment.

### About FPCUP

The “Framework Partnership Agreement on Copernicus User Uptake” is an EU-funded project with a total of 219 actions for enhancing the user uptake of Copernicus data and products. It started in July 2018 and aims at increasing the number of Copernicus users and applications derived from Copernicus data or products by different actions. The project is lead by the German Aerospace Center (DLR Space Agency). 50 partners from 23 European countries are part of the consortium comprising a broad expertise on national and international Copernicus user uptake.

### DLR at a glance

DLR is the Federal Republic of Germany’s research centre for aeronautics and space. We conduct research and development activities in the fields of aeronautics, space, energy, transport, security and digitalisation. The German Space Agency at DLR plans and implements the national space programme on behalf of the federal government. Two DLR project management agencies oversee funding programmes and support knowledge transfer. Climate, mobility and technology are changing globally. DLR uses the expertise of its 55 research institutes and facilities to develop solutions to these challenges. Our 10,000 employees share a mission – to explore Earth and space and develop technologies for a sustainable future. In doing so, DLR contributes to strengthening Germany’s position as a prime location for research and industry.

### Imprint

DLR, Deutsches Zentrum für Luft- und Raumfahrt e. V., EOC – Earth Observation Center, Münchener Str. 20, 82234 Wessling/Oberpfaffenhofen, info@dlr.de, www.DLR.de. All images are property of DLR (CC-BY 3.0) unless otherwise stated. Cover image: DLR



FPCUP Summer-School and Workshop

Copernicus for Cultural Heritage

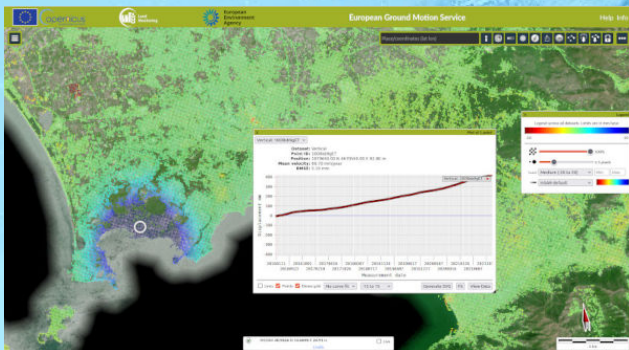
July 15.-17. 2025  
Oberpfaffenhofen

The workshop at the premises of DLR at Oberpfaffenhofen near Munich will cover the topics:

- Download and process Copernicus data for cultural heritage applications
- Case studies on how Copernicus data is used for cultural heritage applications
- SAR - what is radar data from space, how can it be used for cultural heritage
- Hyperspectral remote sensing data - what is hyperspectral data, how can it be used and how can it be accessed
- High resolution optical imagery from contributing missions, how can it be accessed, how can it be used in cultural heritage

The workshop will highlight initiatives, research projects, and operational services based on the free and open Copernicus data and contributing missions for tangible and natural cultural heritage preservation and management.

Examples include archaeological sites monitoring and identification, estimation of damages and looting of sites, ground motion detection, hazard and risk assessment maps, natural subsidence, urban sprawl monitoring, climate change indicators, air pollution monitoring, coastline monitoring (erosion), bathymetry for submerged sites and others.



## Programme at a glance:

The workshop will be held starting Tuesday, 15. July 2025, 8:30 until Wednesday 16. July 16:00 at the premises of DLR (German Aerospace Center) in Oberpfaffenhofen near Munich in Germany.

Optionally there is also the possibility to participate on a bus tour to Augsburg visiting the UNESCO World Heritage “Augsburg Water Management System” including also other historic city sites on Thursday 17. July from 9:00 to 16:00.

You have the possibility to contribute to the workshop with a User Application Presentation of about 15 minutes and/or a poster (DIN-A0 portrait) on a use-case you want to discuss with earth-observation experts or other participants.

Time	Tuesday 15.07.	Wednesday 16.07.	Thursday 17.07.
08:30-09:00	Arrival and Registration		
09:00-10:30	Opening, Keynotes	DLR-Workshop	Excursion to Augsburg
10:30-11:00	Coffee break		
11:00-12:30	Participant Session	Participant Session	
12:30-13:30	Lunch break		
13:30-15:00	Participant Session	DLR-Tour	
15:00-15:30	Coffee break		
15:30-17:00	Participant Session	Closing, End 16:00	
17:00-20:00	Ice-Breaker		

Register by sending an e-mail to [FPCUP-CH SummerSchool-2025@dlr.de](mailto:FPCUP-CH SummerSchool-2025@dlr.de) by telling us:

- I will attend the Summer-School on 15./16.7.
- I will participate in the CH-tour on 17.7.
- I will give an User Application Presentation
- I will bring a poster

If you have some further questions send them also to [FPCUP-CHSummerSchool-2025@dlr.de](mailto:FPCUP-CHSummerSchool-2025@dlr.de).

## Organisational information

### Venue

German Aerospace Center (DLR), Münchener Straße 20, 82234 Weßling - The workshop will be held at the premises of the Earth Observation Center (48.0862N, 11.2786E)

### Travel to the DLR site Oberpfaffenhofen

The DLR site Oberpfaffenhofen site is approximately 25 kilometres west of Munich on the Munich-Lindau motorway (A96). For details see <https://www.dlr.de/op>, "Anreise und Lage"

### Accommodation

Nearby is the hotel Courtyard by Marriott which offers rooms at DLR rates of about 90 € (1 km), next hotels are Sopherl am See in Wessling (about 3 km) or hotels Zur Post or Seehof in Herrsching (about 15 km).

### More details

You can find more details and the actual program also on the corresponding FPCUP website at <https://www.copernicus-user-uptake.eu/user-uptake/details/copernicus-for-cultural-heritage-summer-school-workshops-449>

